

Chula Vista Development

1951 SW 30 TER, Fort Lauderdale, 33312

FOR SALE

Lots|Homes|Granny Flats

RESERVE YOUR
SPOT



use phone camera
to scan code

PROPERTY DETAILS

Address	1951 SW 30 TER,33312
Sub Market	Chula Vista
Zoning	RS-6.85b
Site Size	8000-10 000 sq feet
Potential Uses	1 SINGLE FAMILY + 1 OR 2 ACCESSORY STRUCTURE

This home development is full of character. Huge oak trees, quite street. Full of blue jays, cardinals and butterflies. Combine two lots to have more than half an acre. Entire development can be purchased.

DEVELOPMENT HIGHLIGHTS

- No Hoa's
- Easy access to I-95 and I-595
- 10 minutes from Trader Joes, Whole foods, Costco, Home Depot
- Can be ready March 2020
- Speed limit 15MPH



Just the Lot Price:

Lot #1	\$159,000	10,008 sq ft
Lot#2	\$159,000	10,008 sq ft
Lot#3	\$125,000	8,087 sq ft



Butterfly Model

Single Family home 3 bed 2 bath 1650 sq ft

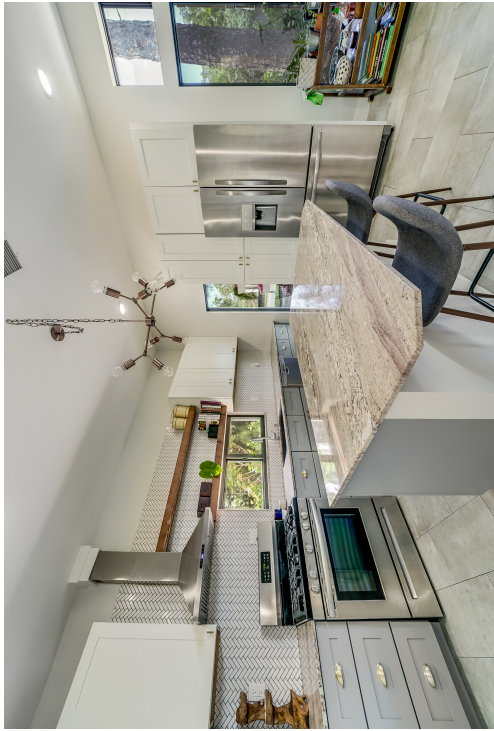
starting at \$450,000 (home and land package)

VIDEO TOUR



use phone camera
to scan code

Floor plans and renderings are not to scale and are for illustrative purposes only. Terms, plans, specifications, features, designs, dimensions, material availability and materials are subject to change or substitution of equal quality without notice, in the sole discretion of FLMODULAR HOMES. Photography includes stock images and is used to depict the spirit of lifestyle and not for specific references. See a FLORIDAMODULAR Homes sales consultant for further information. 02/19

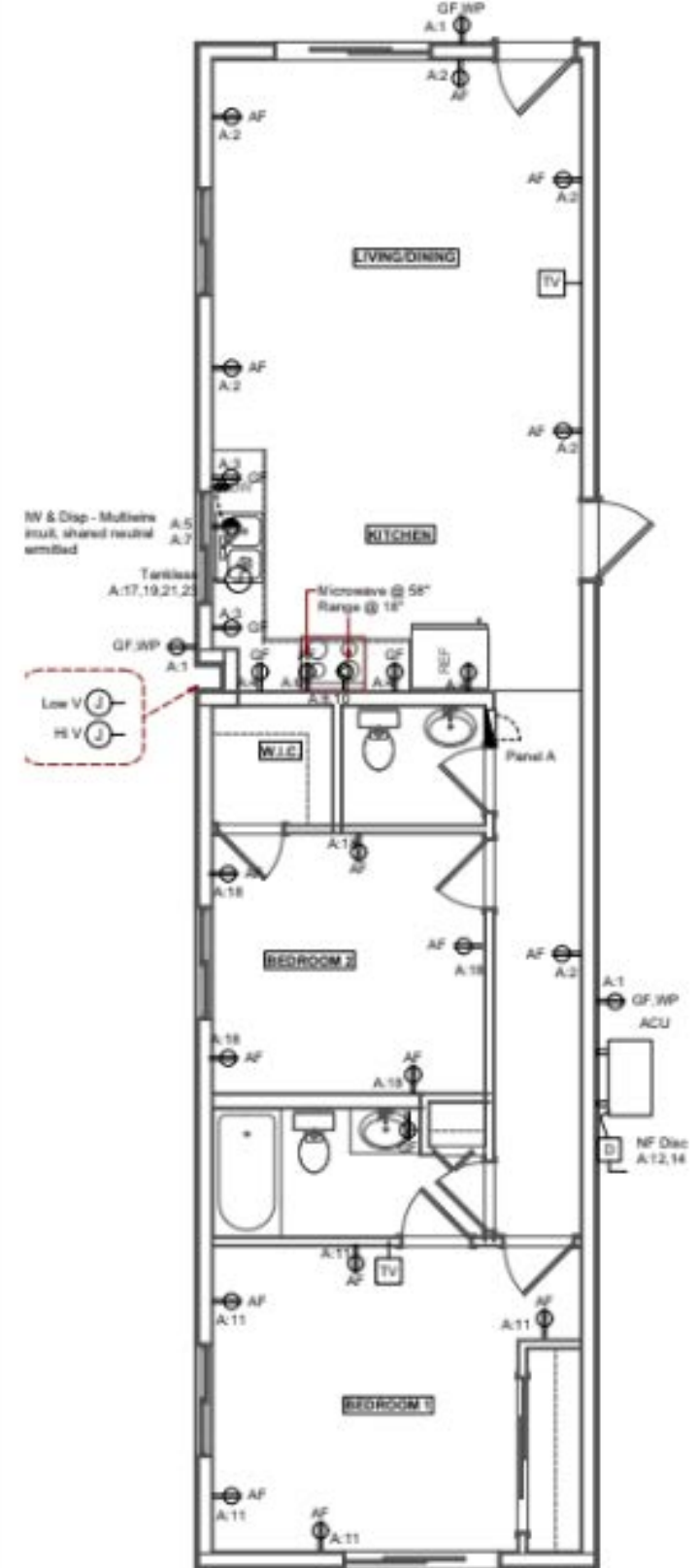




Stacked Model

Single Family Home 2 bed 1.5 bath 966 sq ft
starting at \$309,000

(land and home)





Granny Flat

1 bed 1 bath 480 sq ft
\$72,000 (land not included)

